

Catering onboard (Floating Café 'Kiwi Cat' can provide up to 38 under cover seats for dining):

Hot & Cold Bar Snacks

+\$10 per person

Morning/Afternoon Tea

+\$15 per person

Lunch platters

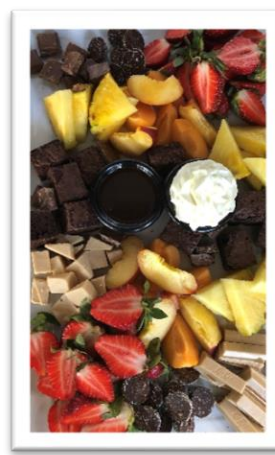
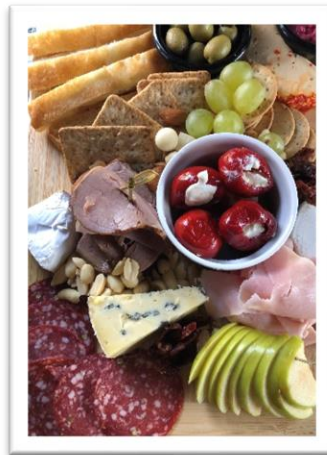
+\$20 - \$30 per person

Grazing Platters (ideal for late afternoon cruising)

+\$25 per person

Kiwi BBQ

+\$35 per person Lunch/dinner \$45



Shuttle/Ferry Service:



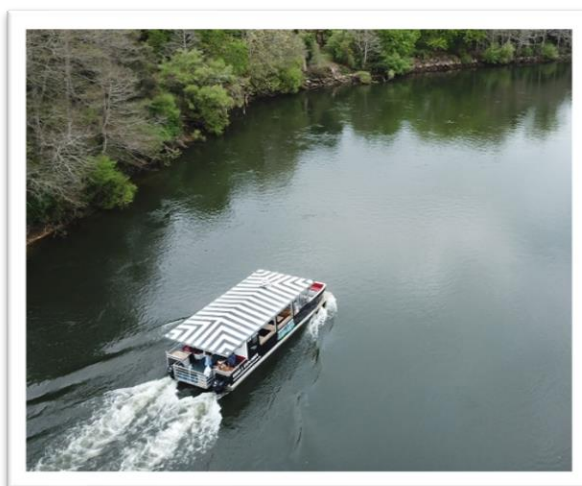
Our newest vessel, Kiwi Cat II can transport up to 29 people between Ferrybank in Hamilton's CBD and Hamilton Gardens or even as far as Mystery Creek Events Centre in comfort.

This is a fantastic option for larger groups wanting a faster and much more thrilling alternative to road transport as a return trip only from Hamilton Gardens to Ferrybank only takes 20 minutes ...

Price to hire the vessel per hour (Includes skipper):

\$400 per hour

'NON-EXCLUSIVE' OPTIONS FOR GROUPS OF UP TO 15 PEOPLE



Café Cruising:

Cruise through the city of Hamilton on our Floating Café Kiwi Cat ... with it's riverside art, riverside homes, century-old bridges and alongside landing sites for both Maori and early European settlement of the region in the 1860s.

Waikato Museum Schedule Winter:

Monday	Tuesday	Wednesday	Thursday	Friday	Saturday	Sunday
					10:30am	
					1pm	
					5pm	

Waikato Museum Schedule Summer (October - March):

Monday	Tuesday	Wednesday	Thursday	Friday	Saturday	Sunday
	10:30am		10:30am		10:30am	10:30am
	1pm		1pm		1pm	1pm
				*5pm	5pm	5pm
				*7:30pm	7:30pm	7:30pm

*November - December only

**Non-Exclusive 'Cruise only' Prices if booked through
www.waikatoexplorer.co.nz**

Weekdays:

Adults	\$29
Seniors/Students	\$27
Children	\$15
Under 5s	FREE

Weekends:

Adults	\$34
Seniors/Students	\$32
Children	\$17
Under 5s	FREE

All prices quoted prices include GST

Standard Terms and Conditions

Non-Exclusive Cruise bookings:

1. Payment in full is required to secure the booking although we recommend only paying for those who have confirmed. NB, Additional bookings may not be possible if the vessel has exceeded its loading limit.
2. In the event that the booking is cancelled by the customer, if that cancellation is not less than 48-hours from the scheduled departure, or an alternative date is not able to be found, a refund is available however a 2% Admin fee will be charged on any refunds due. If that cancellation is less than 48-hours from the scheduled departure, all payments made are non-refundable.
3. In the event of a cancellation by the operator, a full refund is available however if the cancellation is the result of pandemic, operational requirements by The Regional Council or Power Company (flooding), the above conditions apply.
4. Electronic payments are preferred.
5. There are no refunds for no-shows.
6. As the vessels are fully licensed, we are unable to permit BYO food or beverages

Exclusive Cruise bookings:

7. Prices quoted are subject to change until a booking is confirmed by the payment of a deposit.
8. A deposit of \$300 is required to secure the booking with the balance due (and confirmation of numbers) no less than 7 days prior to sailing.
9. In the event that the booking is cancelled by the customer, if that cancellation is not less than Fourteen (14) days from the scheduled departure, or an alternative date is not able to be found, a refund of the full amount less the deposit and a 2% Admin fee is available. If that cancellation is less than Fourteen (14) days from the scheduled departure, all payments made are non-refundable.
10. In the event of a cancellation by the operator, a full refund is available however if the cancellation is the result of Pandemic or operational requirements by The Regional Council or Power Company (flooding), the operator is only obligated to either provide an alternative venue or re-schedule the booking to a more suitable date and time.
11. Electronic payments are preferred.
12. As the vessels are fully licensed, we are unable to permit BYO food or beverages.

Please call or email if you require further information and we will see you on the mighty Waikato River!

The Reservations Team
Waikato Explorer Ltd
Ph: (0800) 1EXPLORE (139 756)
www.waikatoexplorer.co.nz



NB: We take great pride in running a sustainable tourist business. Our engines are low emission, we recycle all materials onboard and take great pride in looking after our precious Awa. For more information, feel free to contact us.